

Jack and Christine's Villa
Chengdu, China
Laurel Quint, Q Interior Design

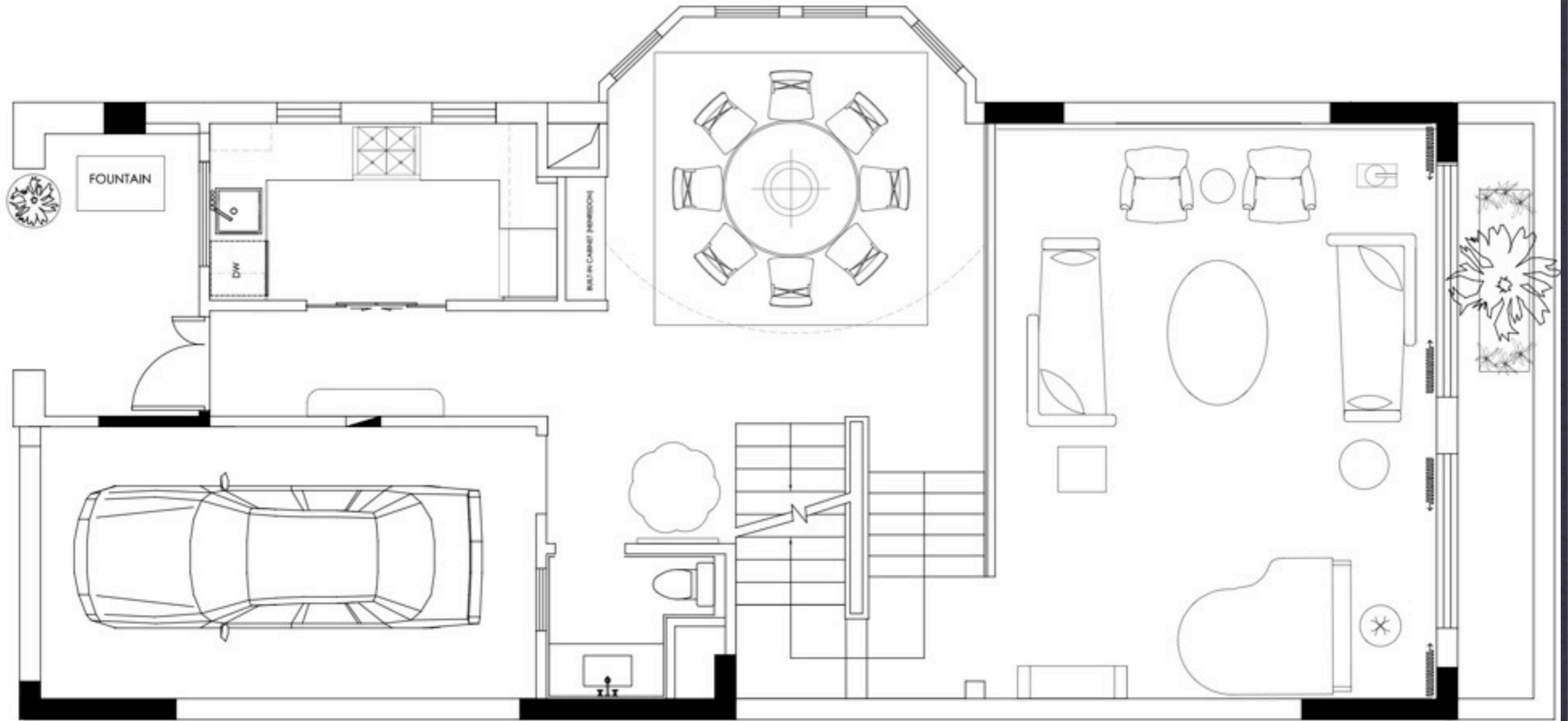
Music is Are You Awake by Kevin Shields

Overall Concept

- * The nature of the concept for this villa, is based on classic modern American design displayed in a confident manner. Q Interior Design works to artfully mix classic and modern design thereby creating a welcoming environment that is comfortable and inviting while intelligent form and furniture combinations intrigue the eye and mind.
- * Our finishes in this case are rich and textural, our woods are uncovered and raw. The lighting is steeped in natural form. Those elements, in tandem, evoke a natural feel to the home, the outdoors is within the interior walls, juxtaposed with the outdoor spaces surrounding the home, we create an indoor habitat where nature is imbued on every level.
- * Color exists throughout the home in rich shades of green, from light to dark, from plain to patterned. The neutrals accent the color adding depth and drama to their vibrancy. Rich well placed shades of magenta; from pink to red, will be used sparingly and yet dramatically highlight the depth and layers of color and texture.
- * Art will play a key role within the space, the interior will work with the art to exude the client's personality as well as the overall mood. Our furniture placement leaves resting places for the eye, space where carefully chosen art can come alive and open up within a room for its own dialog.
- * Boldness stands strong with our sparing use of furnishings and objects that are always placed to complement the architectural mood. All elements work together harmoniously with their occupant to create a life that positively affects the owner as well as those around him as ventures out into his world everyday.

Main floor plan and furnishings

conceptual key pieces and main finishes only



PROJECT

MAIN FLOOR, LAYOUT FURNITURE PLAN

DATE

10-17-09

CLIENT

JACK AND CHRISTINE

ENTRY CONSOLE



ART ABOVE CONSOLE



MIRROR ABOVE ROUND TABLE BY POWDER



DETAIL OF CONSOLE



DRAPERY FABRIC IN DINING ROOM



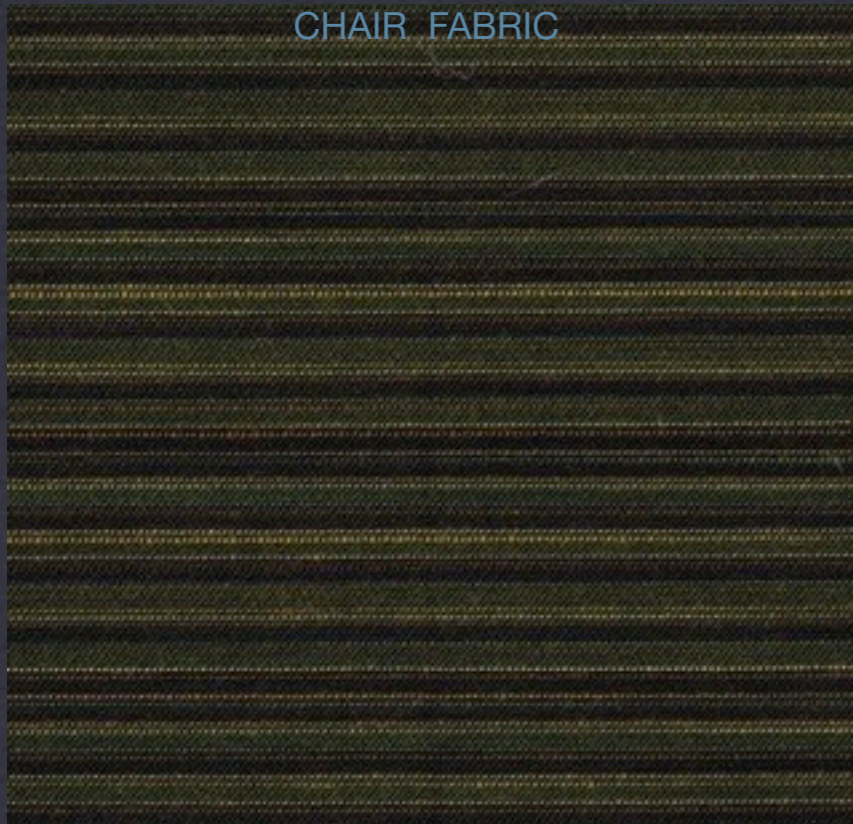
ROUND TABLE BY POWDER



ENTRY

FURNITURE, ART, DRAPERY FABRIC

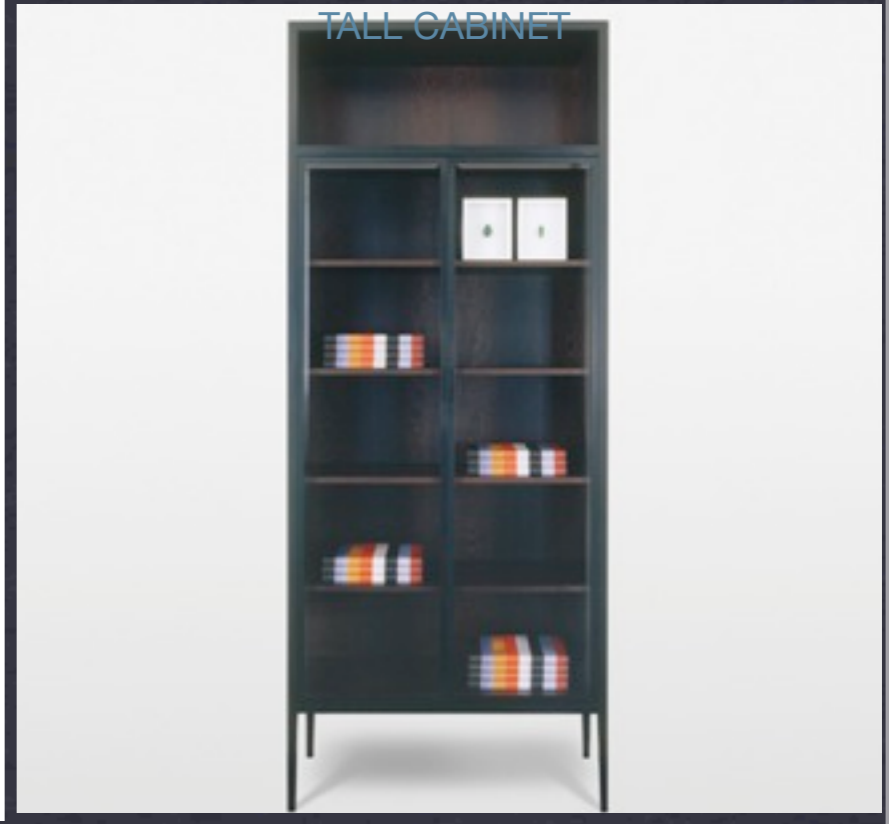
CHAIR FABRIC



DINING TABLE



TALL CABINET



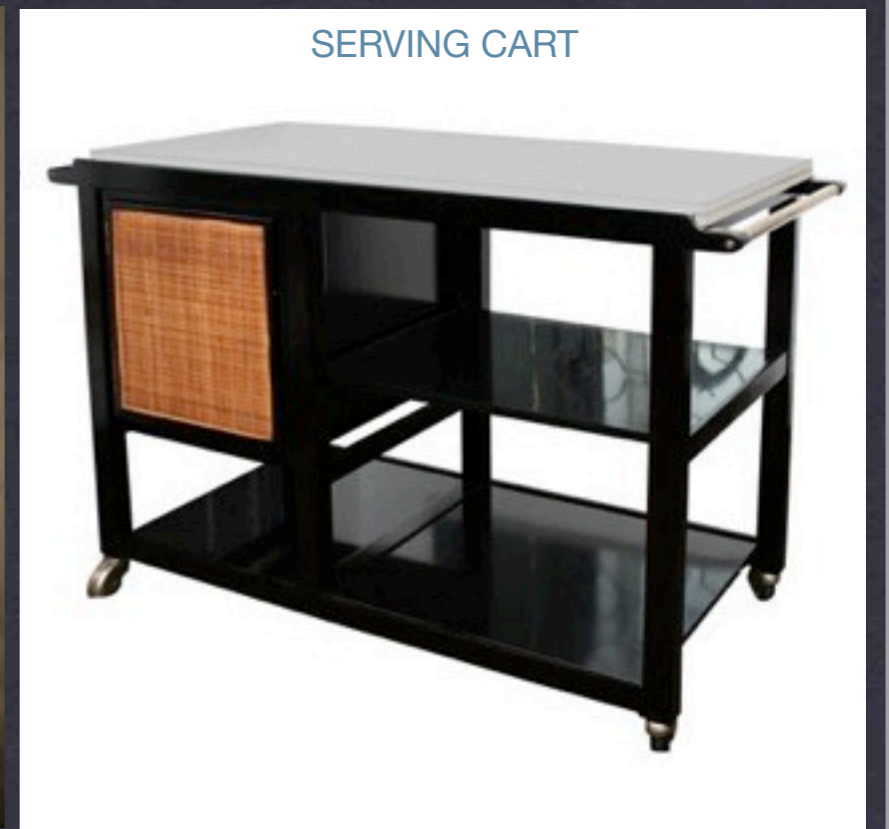
DINING CHAIR



DINING CHANDELIER



SERVING CART



DINING ROOM

FURNITURE, FINISHES, FABRICS

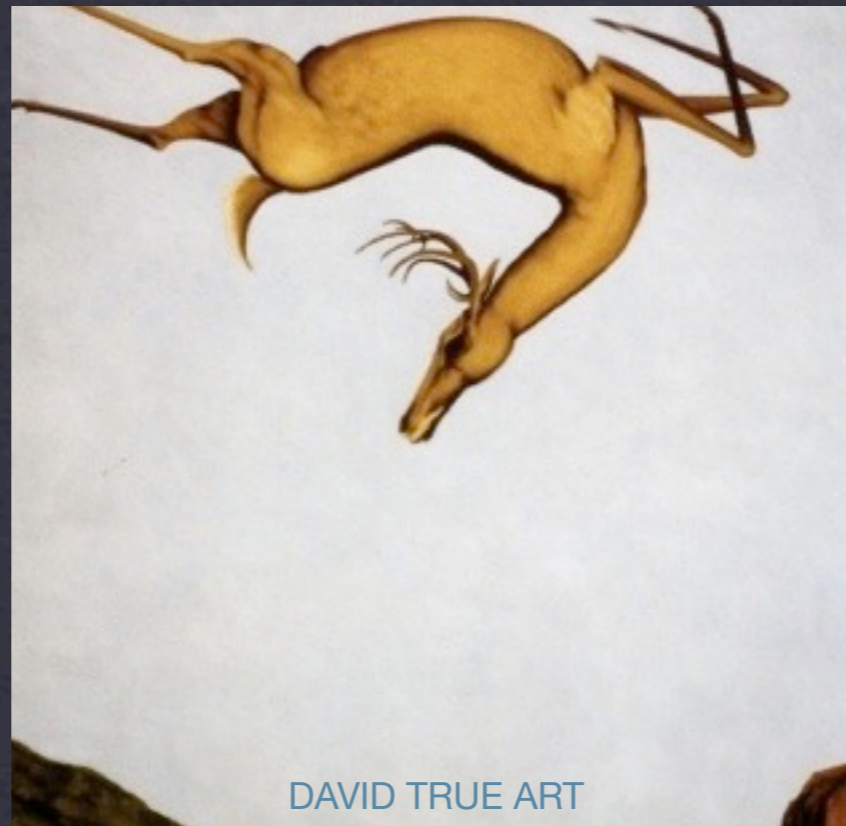
ROBSJOHN GIBBINGS FAUTEIULS



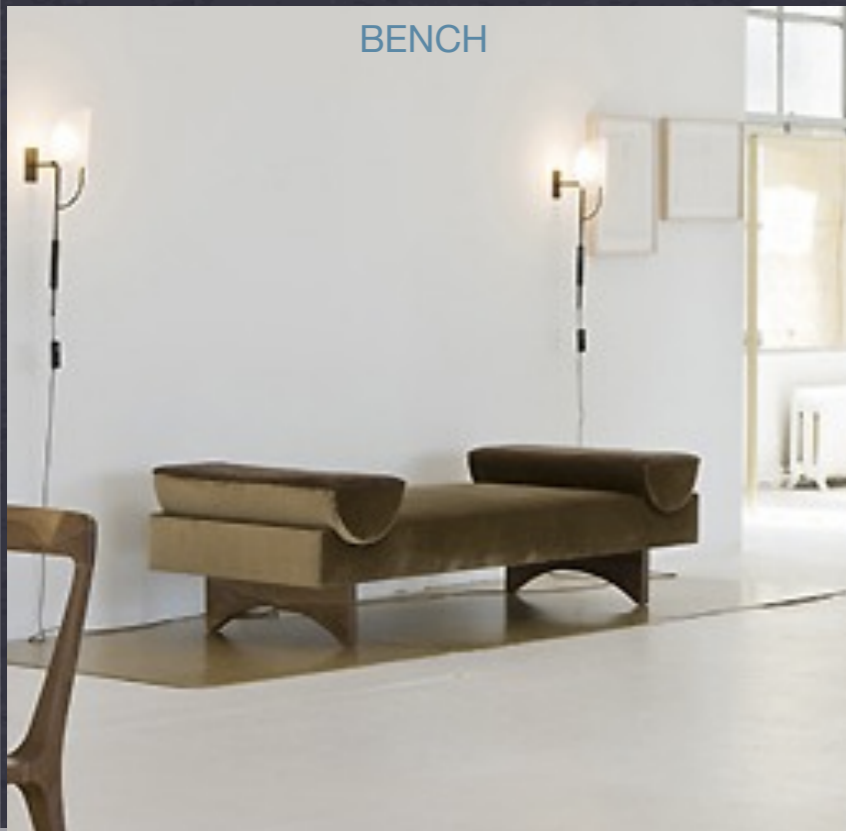
ISLAND SOFAS



DAVID TRUE ART



BENCH



COCKTAIL TABLE



FLOOR LAMP



LIVING ROOM

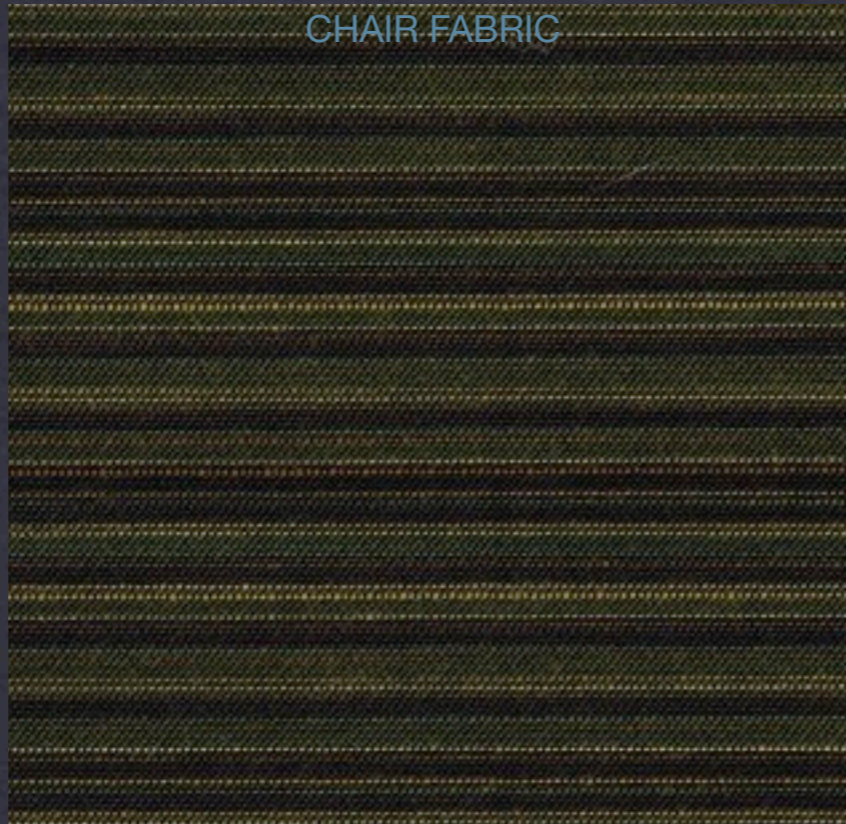
FURNITURE, FABRIC, ART, LIGHTING

PAGE 1

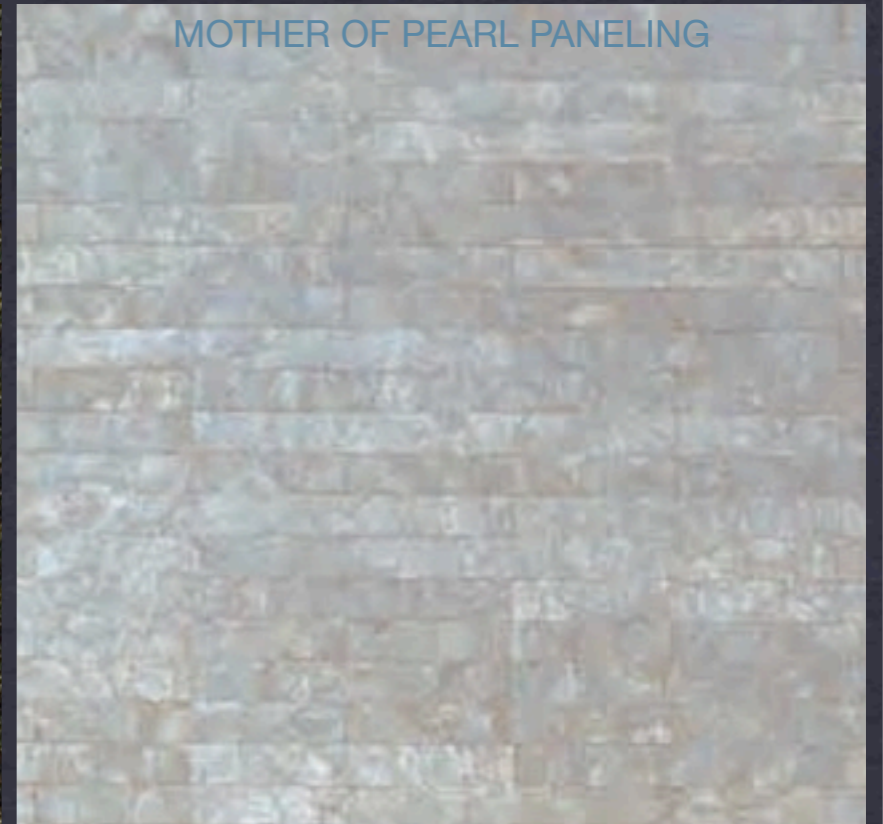
SIDE TABLE



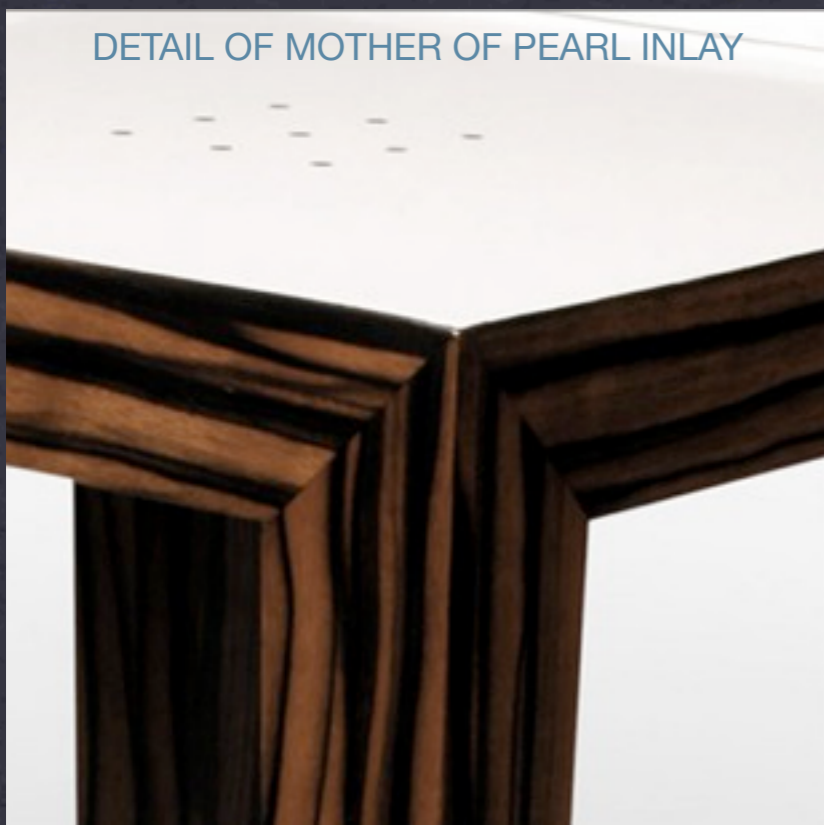
CHAIR FABRIC



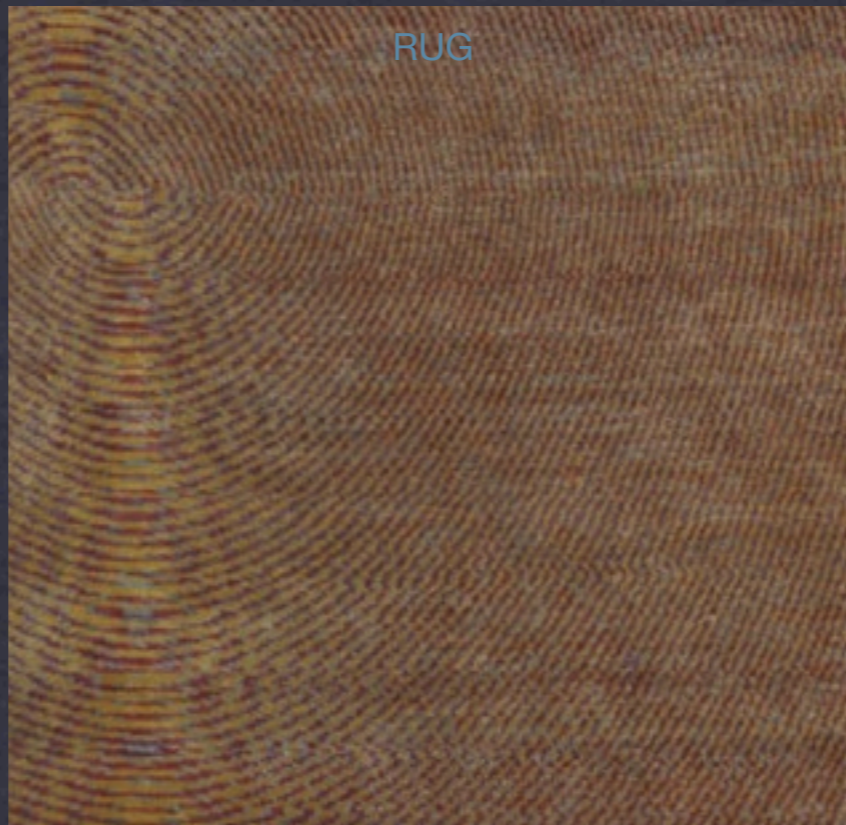
MOTHER OF PEARL PANELING



DETAIL OF MOTHER OF PEARL INLAY



RUG



NESTING SIDE TABLES



LIVING ROOM

FURNITURE, FABRIC, WALLCOVERING, RUG

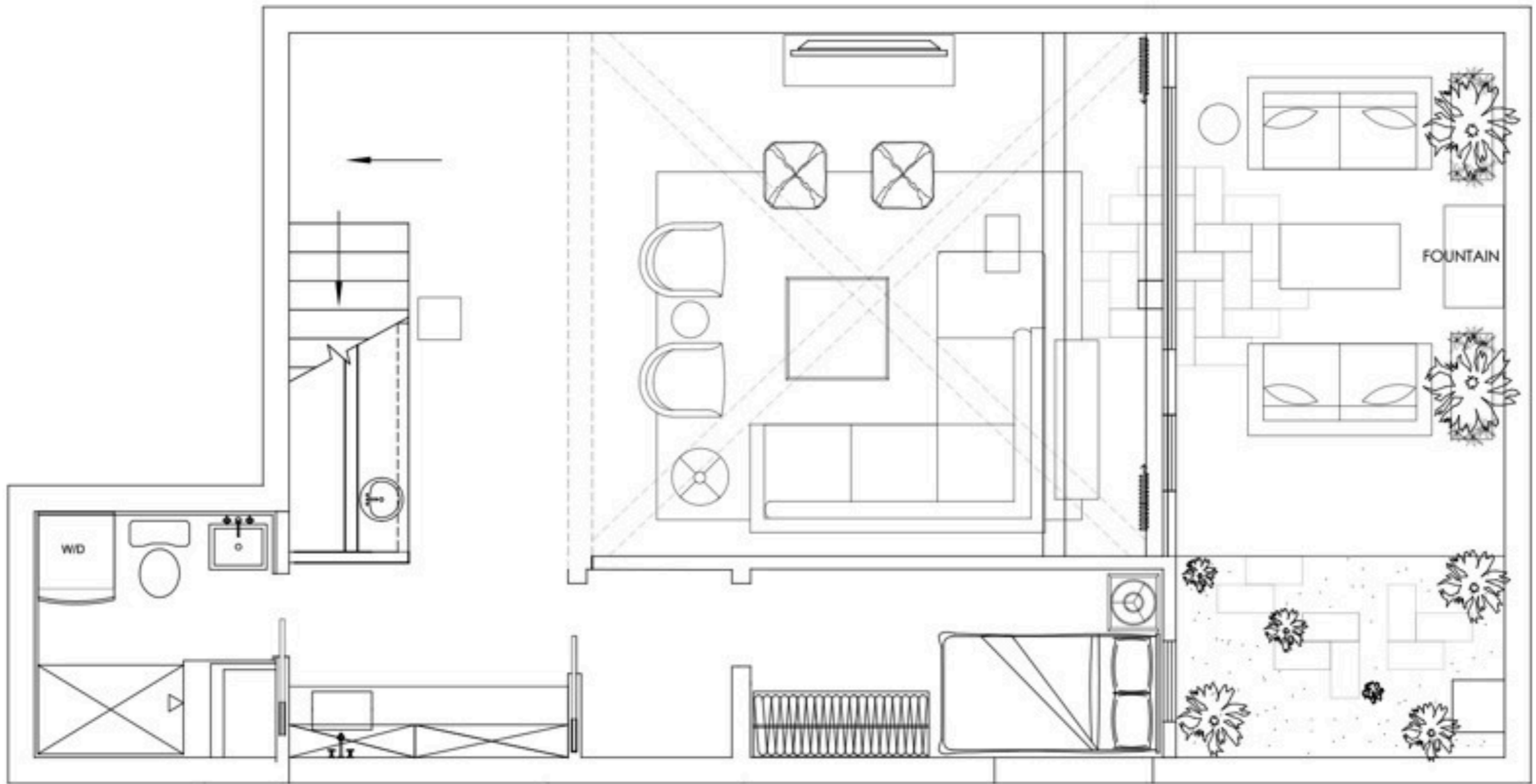
PAGE 2

Notes on Main level

- * The entry area is defined by a console that is made from steel and is lacquered. The spun steel form at the top is a prelude to simple curves to come amongst the clean lines. The art above the console is whimsical with it floating home sitting amongst the trees and safe and expected landscape. A more classic table sits outside the powder with a mirror above it to add light reflection. 1. Console for entry 2. Art above console 3. Mirror above powder room table 4. Detail of Console 5. Rug for dining (color maybe modified) 6. Table outside of powder
- * The dining room with its natural walnut finished table is strong and elegant for entertaining, while still being comfortable for daily eating. The chairs are a comfortable barrel style and very modern in form, The fabric on the chairs is a small scale stripe that is easily cleaned, and combines the colors being used throughout. The tall cabinet has open display at the top thereby lifting the eye to the elegant branch like form of the chandelier. the tall cabinet would hold dishes, silver, and a bar. We have added a rolling cart as a server to move dishes, food, and drinks to and from the kitchen. There will be a narrow resting spot for drinks and dishes on the railing that divides the living room from the dining. 1. Serving cart 2. Dining table 3. Tall cabinet, to be made as a built-in 4. Dining Chair 5. Chandelier 6. Fabric on dining chairs
- * The living room is a bold space, initially set off by the David True painting that grounds the large back wall and sets the stage for the Island sofas that sit face to face, one right facing and the other left facing. The cocktail table is oblong and well weighted to hold the center of the room. The vintage Robsjohn Gibbings fauteuils are an elegant mirror to the deers leaping legs. The modern floor lamps flank the sides of the painting with their delicate green glass drop shade. The side tables are not matching, one is walnut with a lacquered top set with a mother of pearl pattern of dots, the other is a set of nesting tables that have gold metal legs and limestone tops. The white piano will offset the neutrality of the room, the strength of this piano at one end of the room is balanced by the painting with the mass of this piece at 2133.60 mm square at the opposite side. The rug is optical, as it changes how it looks as you move within the room, in some spots it looks very neutral, and in others a strong green or magenta will appear, only to disappear as you move again. There is a bench at near the piano, this transitional seating is perfect for a party and a quiet tete a tete.
- * The main floor will have stone flooring, a large format tile with a striated pattern that will be laid in a basket weave pattern throughout.

Lower Level

Conceptual key pieces and main finishes



PROJECT

LOWER LEVEL SITTING AREA

DATE

10.17.09

CLIENT

JACK AND CHRISTINE

MEDIA CABINET UNDER TELEVISION



SECTIONAL



STOOLS



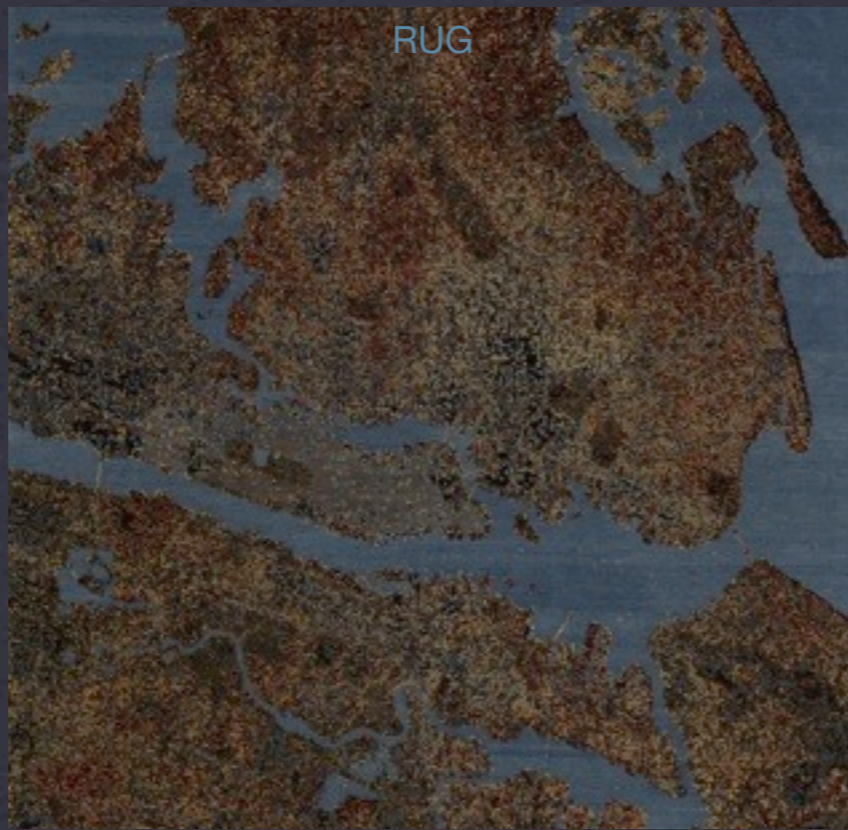
SITTING ROOM ON LOWER LEVEL PAGE 1

SECTIONAL, MEDIA CABINET, STOOL

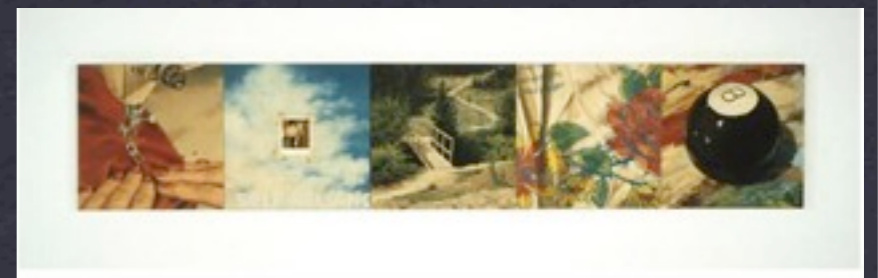
COCKTAIL TABLE



RUG



ART



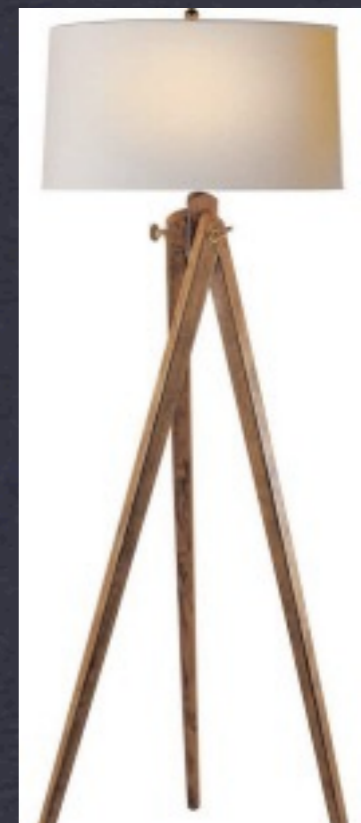
SIDE CHAIRS



SOFA UPHOLSTERY



FLOOR LAMP



SITTING ROOM ON LOWER LEVEL

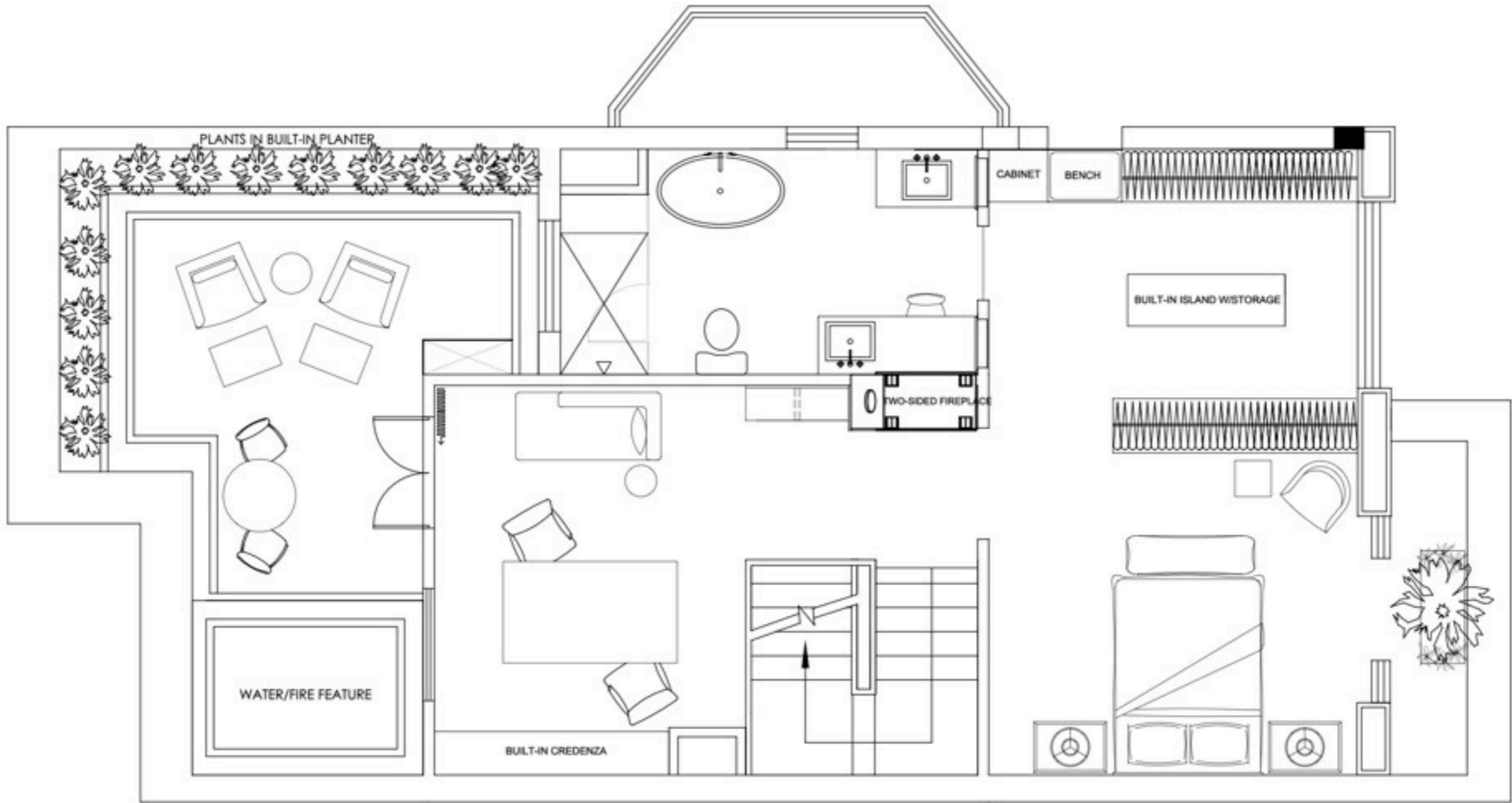
FURNISHINGS, RUG, ART, LIGHTING, FABRICS

Notes on Lower level

- * My favorite thing about the lower level is its connection to the sun deck and how large it is. I think that view will be greatly appreciated.
- * The space down here will get a lot of use, I see this as being family friendly; video games, tv, visiting friends will gather here with their kids.
- * The room should be casual with several transitional seats available to move about.
- * The flooring that is throughout should continue to the outdoors so that in good weather that patio feels like it is an extension of the space.
- * There is a garden at one end of the patio.
- * The finishes on the lower level will be durable and wear well.
- * We would like to do a ceiling detail down here, and we are looking for clear details on the beams locations.

Master Suite

Conceptual key pieces and main finishes



LEVEL FOUR

PROJECT

MASTER SUITE

LEVEL 4

DATE

10.17.09

CLIENT

JACK AND CHRISTINE

DESK CHAIRS BY PARZINGER



BOOKSHELVES BEHIND DESK



CHAIR FABRIC



DETAIL OF DESK CHAIR



PARTNERS DESK



JJTC 3005
Le Leu Desk



PANELING STYLE AROUND FIREPLACE

OFFICE

FURNISHINGS, FABRICS, PANELING STYLE

PAGE 1

CHAISE



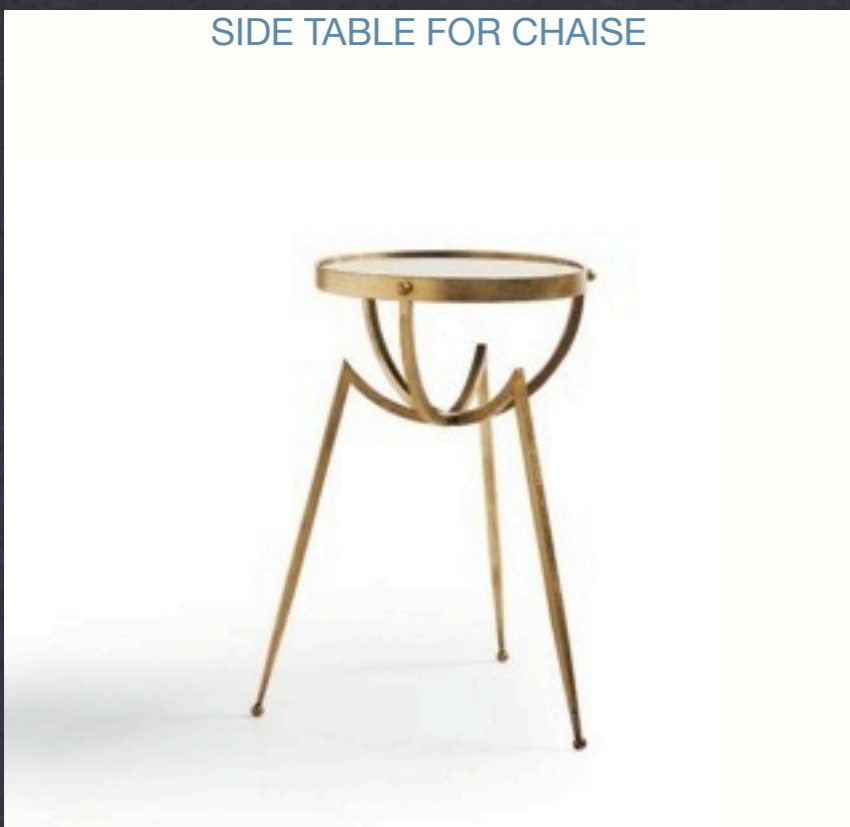
RICARDO MAZAL PAINTINT



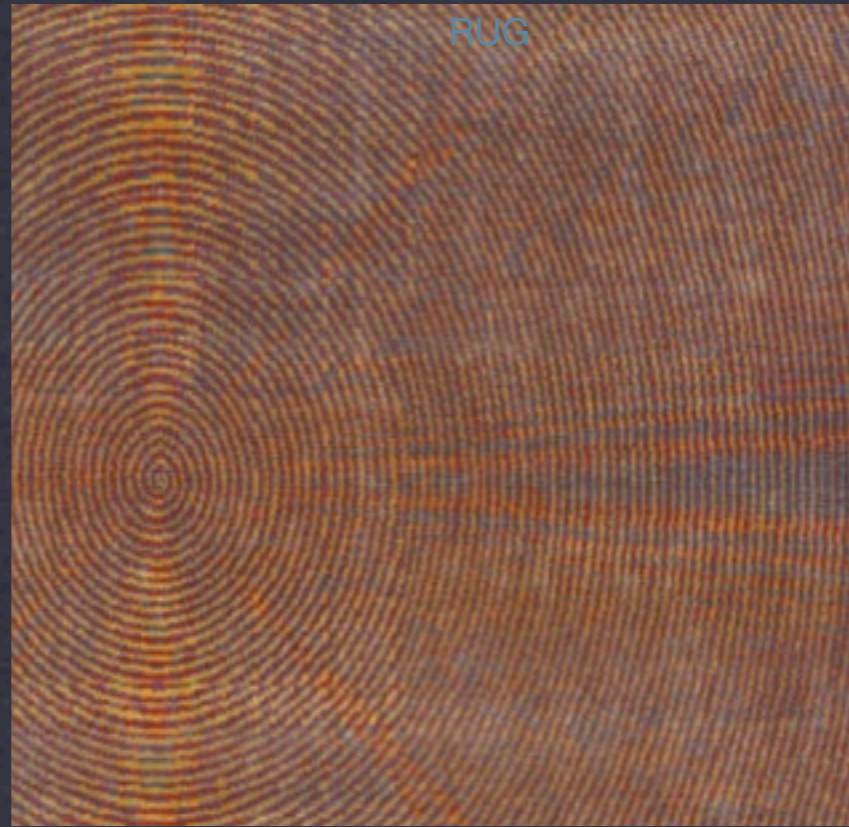
3 SIDED FIREPLACE



SIDE TABLE FOR CHAISE



RUG



CONSOLE AT TOP OF STAIRS



OFFICE

PAGE 2

FURNISHINGS, ART, 3 SIDED FIREPLACE, RUG AND CONSOLE

BED AND NIGHTSTANDS WITH SILVER LEAFED DECORATION



FABRIC FOR BEDDING



RUG



MASTER BEDROOM PAGE 1

BED AND NIGHTSTANDS, BED COVERING, RUG

CHAIR FOR BEDROOM



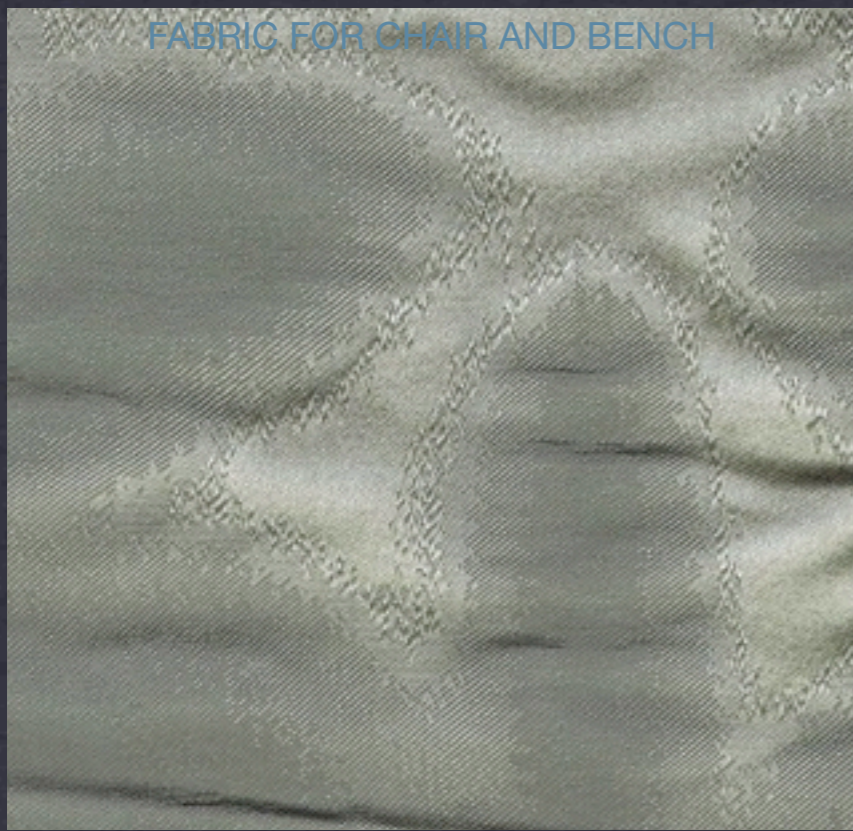
ART



3 SIDED FIREPLACE



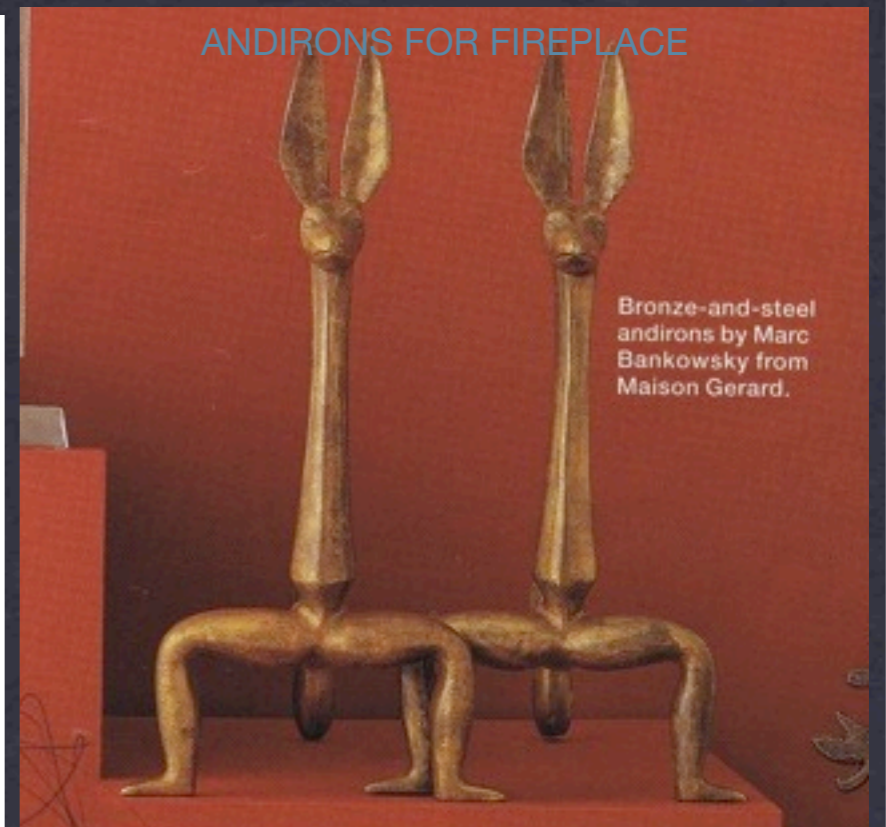
FABRIC FOR CHAIR AND BENCH



BENCH AT END OF BED



ANDIRONS FOR FIREPLACE



Bronze-and-steel andirons by Marc Bankowsky from Maison Gerard.

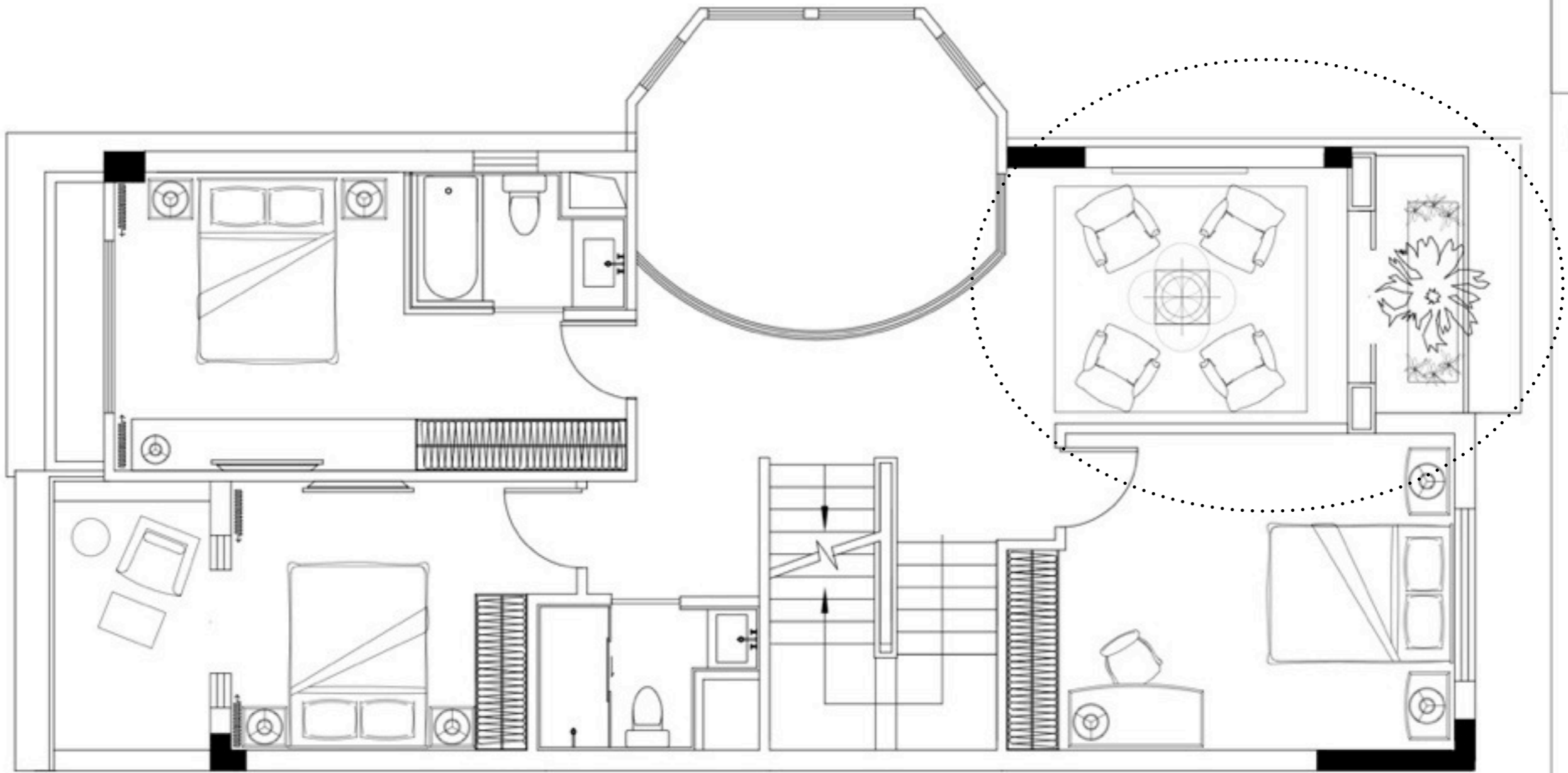
MASTER BEDROOM

PAGE 2

FURNISHINGS, ART, 3 SIDED FIREPLACE, ANDIRONS FOR FIREPLACE

Notes on Master suite

- * We are viewing the master suite as a space that is very private to anyone but the owners. This should be their sanctuary and space for renewal. When you enter the space you have a mirrored console directly in front of you and then to the right, a key component, a three sided fireplace that is viewable from the office, the master bedroom and the master bath.
- * The office has a chaise within the space for reading and contemplation and a small side table. The desk is a partners desk so both can be working at the same time, it is modern in style with some art deco elements. behind the desk is a built-in credenza which has file storage, and supply storage. Above the credenza is an open book shelf by the great American designer Tommi Parzinger. The chairs are also by Tommi Parzinger, they are simple, modern, comfortable chairs with a curved detail at the end of the arm. 1. desk chairs 2. book shelf above credenza 3. fabric for chairs 4. chair detail 5. desk 6. paneling detail for fireplace 7. chaise 8. Ricardo Mazal art 9. fireplace 10. side table 11. rug 12. console
- * The office leads to an outdoor space that will have a small table to sit at. The space will also have two lounge chairs with ottomans for reclining. The key feature here is the water feature, the noise from the water will create a soothing sound for relaxing or working. In the evening the water feature may also utilize the small gas fire that will burn up and out of the water.
- * The master bath and closet have features that will be greatly appreciated and utilized. The medicine cabinets have electrical outlets within, they also have defoggers. The fireplace can be seen from within the space too. There is a freestanding bathtub with air jets and a steam unit in the shower. Within the closet we have a linen cabinet, an island that holds folded clothing and jewelry. We can add a safe within this space as well for valuables. There is a small bench for sitting and putting on shoes if needed.
- * The Master bedroom is a quietly elegant space with a platform bed that has the nightstands attached to the head board. At the foot of the bed is a Parzinger bench, that can hold the bed coverings in the evening. A serene piece of art sits at the wall opposite of the bed, there is also a chair and a pedestal in the corner that holds flowers. The planter outside on the patio with a lovely combination of flowers and perhaps a small tree so the view from the bed is lovely. 1.bed with nightstands 2. bedding fabric 3. rug 4. chair 5. art by Darren Waterston 6. fabric for bench 7. andirons for fire place
- * This private suite again combines the classic and modern, we have subtly shifted our color palette and evolved the overall feel to be more relaxing and sedate.



3 LEVEL THREE
SCALE: 1/4"=1'-0"

PROJECT

THIRD LEVEL SITTING AREA

DATE

10.17.09

CLIENT

JACK AND CHRISTINE

SLED BASE WING CHAIR



CENTER LIGHT OVER TABLE



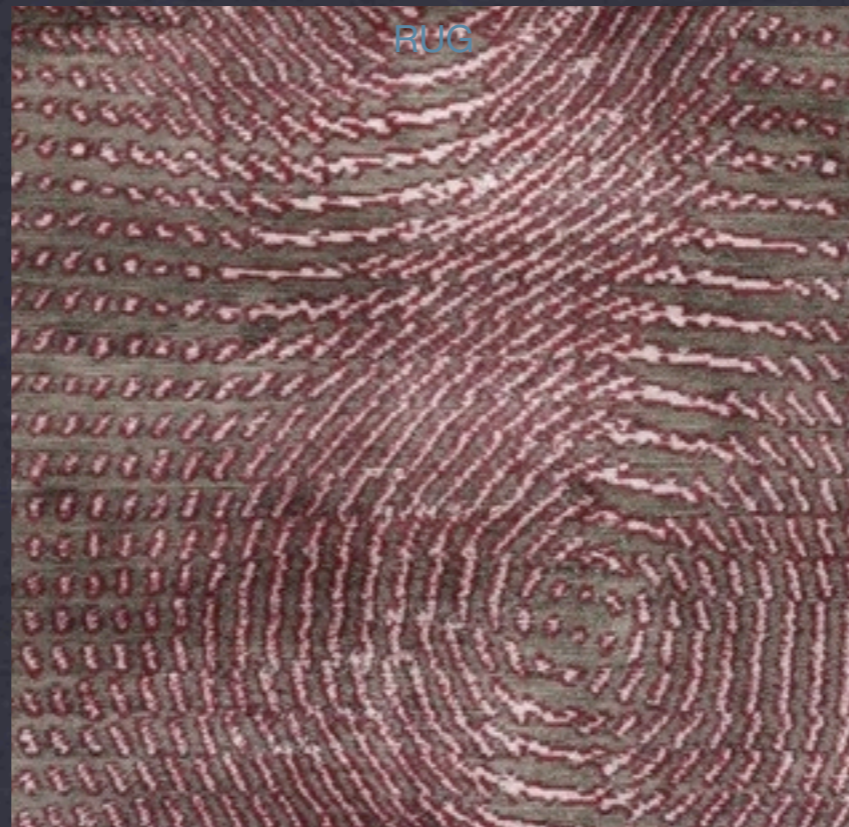
DROP LEAF GAME TABLE



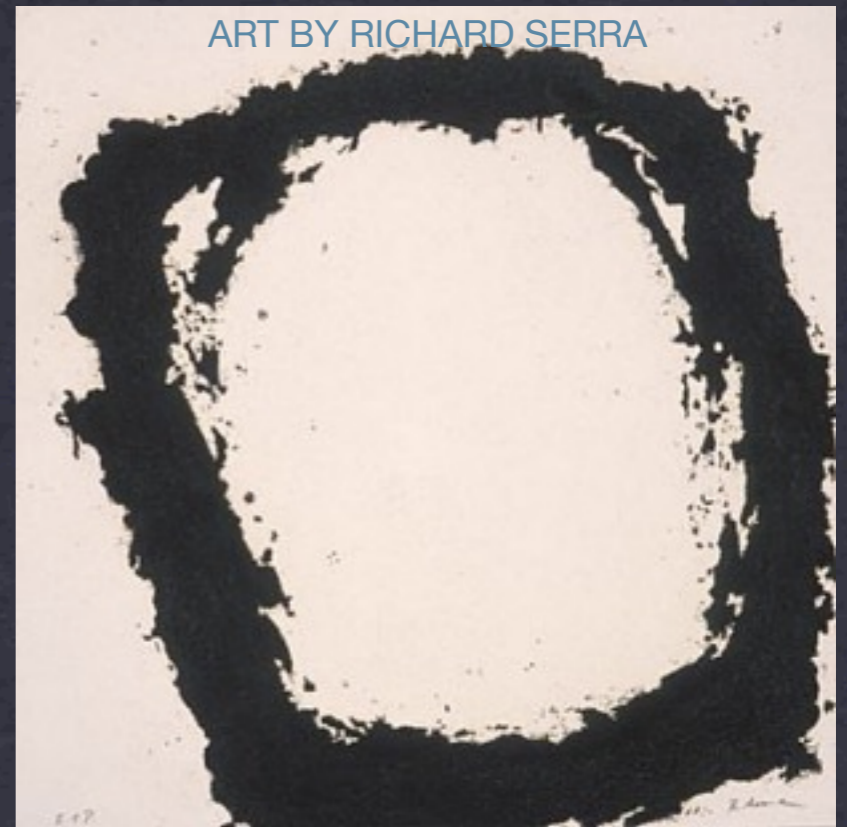
PETRIFIED WOOD PEDESTAL



RUG



ART BY RICHARD SERRA



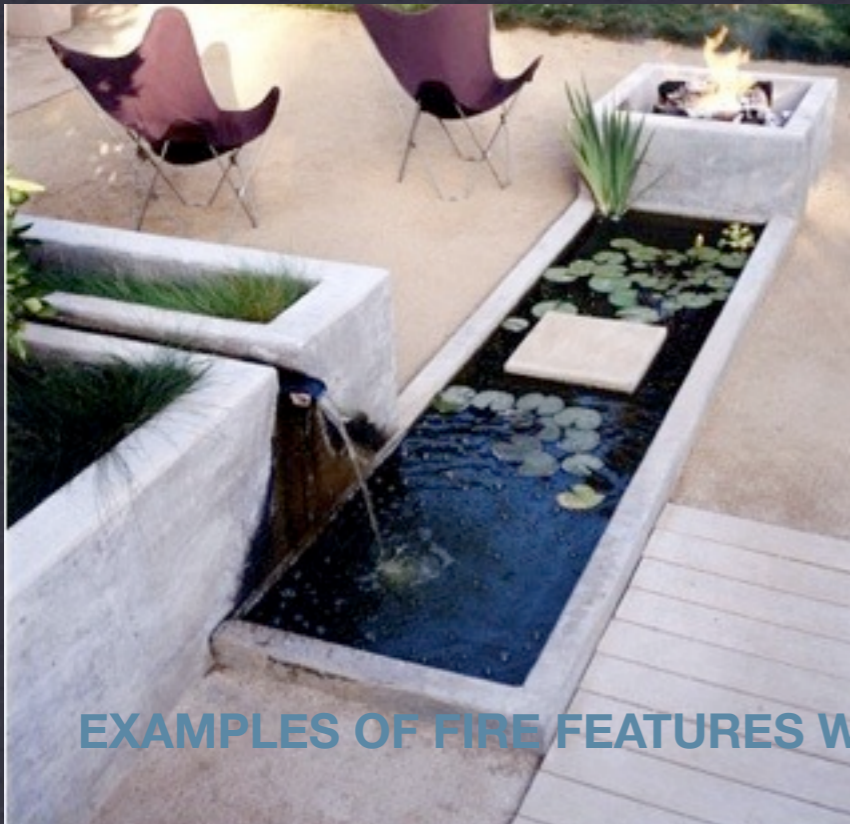
SITTING AREA ON THIRD FLOOR

LIGHTING, FURNISHINGS, ART, RUG

Third Floor Notes

- * For this presentation we are only showing the public area of this floor so that the cohesiveness of the style can be seen threading through your entire home. Also, we have only had a week to work on this since our meeting!
- * The third floor has an interesting seating area available, we saw this as a great game and conversation area. I love the connection to the open living space below as the piano can easily be heard up here too. We chose a light fixture that really connects the space to its surroundings, the sticks that emerge from the top and bottom of the lamp shade definitely integrate the light into the center of the seating arrangement. The chairs surround the light and keep everyone connected like sitting around a fire together would. The table we chose has leaves that fold up to make the table larger for games, and the chairs while being comfortable are upright enough to easily play a game. Between each pair of chairs is a small pedestal of petrified wood in black and white, these can be used as tables, but I could see them being used as pedestals for flower arrangements, blossoming branches or art. The pedestals connect with the art shown here by Richard Serra. I love the bit of Magenta within the rug to keep the color vibrant and interesting. 1. Donghia chrome sled base wing chair 2. Center light fixture 3. Game table with drop leaves 4. fabric for chairs 5. rug for floor under seating area 6. Richard Serra Monograph 7. and 8. pedestal options

Exterior Spaces



EXAMPLES OF FIRE FEATURES WITHIN WATER



TILE FOR LOWER LEVEL INTERIOR AND EXTERIOR
GREAT PLANTERS AND MASSING



GREAT PLANTER STYLE



GREAT PLANTER STYLE AND MASSING

EXTERIOR
GARDEN CONCEPTS THROUGHOUT

PAGE 1



THE UPSTAIRS OUTDOOR SEATING SHOULD BE MORE RELAXED AND CAREFREE, WHICH IS WHY WE PICKED SIDE TABLES THAT CAN ACT AS A TABLE OR STOOL. THE SPHERICAL SIDE TABLES COME IN SEVERAL COLORS; RED, BLUE, NATURAL AND CHARCOAL. THE GLASS TOP TABLE FOR EATING OR WORKING HAS A GREAT PATTERN THAT SHOWS THROUGH THE GLASS FOR VISUAL INTEREST, WHICH IS WHY WE PAIRED IT WITH THE CLEAN HORIZONTAL LINES OF THE LOUNGE CHAIRS. THE JUXTAPOSITION WILL BE SIMILAR TO MODERN PIECES WITHIN A TOPIARY GARDEN!

EXTERIOR FOR MASTER SUITE

GARDEN CONCEPTS AND FURNISHINGS



1



THIS FURNITURE IS REPRESENTATIVE OF WHAT WE WOULD DO FOR THE LOWER LEVEL OUTDOOR FURNITURE , SOFT, INVITING PIECES FILLED WITH WOVEN SURFACE TEXTURE ON THE LOVE SEATS. THE WEAVE ADDS A VISUAL INTEREST FROM THE INSIDE VIEW AGAINST THE SMOOTH TILE FLOOR THAT TRANSFERS FROM INSIDE TO OUTSIDE. THE WOOD BENCH AND TABLE ADD THAT NATURAL ELEMENT TO THE SETTING.

EXTERIOR LOWER LEVEL

CONCEPT FURNISHINGS

Laurel Quint, Q Interior Design llc.

1611 Grape Street
Denver CO, USA 80220

QInteriorDesign.com

720.231.5965 303.778.7072